

# miniK 10m

**unique** electronic cam lock

● cabinets    ● lockers    ● boxes

## OPERATING MANUAL



**Kilitronik**  
VEMUS

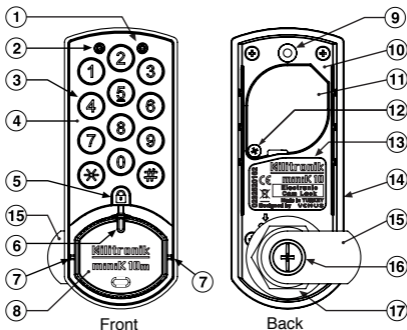
 Please read this manual before using the **miniK 10m**

## INDEX

Introduction.....	3
Initial Setup.....	4
Assign Master Card.....	4
Selecting Operation Option Of The mini K10m.....	4
Assign or Delete Service Cards.....	5
Assign User Card / Cards.....	5
Deleting User Card.....	5
Operating Instructions.....	6
Personal Operation With Card To Lock / Unlock.....	6
Locker Mode Operation With Card To Lock / Unlock.....	6-7
Cardless Personal Operation.....	7
- Change Password.....	7
- Unlock With Password.....	7
- Unlock With Cards.....	7
- Lock With Password.....	8
- Lock With Cards.....	8
Cardless Locker Mode Operation.....	8
- Lock With Password.....	8
- Lock With Card.....	8
- Unlock With Password.....	9
- Unlock With Cards.....	9
Locker Mode Operation with Card or Password to Lock/Unlock.....	10
- Lock With Password.....	10
- Unlock With Password.....	10
- Lock With Card.....	11
- Unlock With Card.....	11
Programming Instructions.....	12-13
Light And Audio Warnings.....	13
Program Table.....	14
Maintenance.....	15
General Warnings.....	15
Limited Warranty.....	16
Liability Limits.....	16
Technical Specifications.....	16
Thank You.....	16
Quick Info.....	17

## INTRODUCTION

- |                     |                         |
|---------------------|-------------------------|
| 1. Red LED          | 10. Lock Body           |
| 2. Green LED        | 11. Battery Cover       |
| 3. Keypad           | 12. Battery Cover Screw |
| 4. Lock Body        | 13. ID Label            |
| 5. Closing Position | 14. Hand Knob Frame     |
| 6. Knob Indicator   | 15. Cam                 |
| 7. Opening Position | 16. Cam Screw           |
| 8. Knob             | 17. Cylinder Nut        |
| 9. Mounting Nut     |                         |



### DESCRIPTION:

Besides the stylish and enriching design of the **K10m** cabinet lock, there are various features that make the lock different from others, such as allowing to use with wet hands, easy and quick installation at wood and steel cabinets, easy application at existing cabinets, easy application at right/left cabinet doors, higher battery life with very low energy consumption, high reliability and operating with a contactless card.

## USAGE:

Contactless card lock can be used with three types of cards: "User Card, Service Card and Master Card". Also, the lock can be used with a password by selecting the user card free operation. Service card is passive by default. You should center the card when holding over the keypad to enable accurate reading. Since the device enters the sleep mode to offer low energy consumption, you need to wake the lock up by pressing any button before each operation.

## INITIAL SETUP:

### • Assign Master card:

- 1- Press **# #**, two tone beep is heard.
- 2- And then present the master card to the keypad until one tone beep is heard and green led blinks.



### • Selecting Operation option of the mini K10m:

- 1- Press **# #**, present the master card to the keypad and press **\***, green and red leds blink.

- 2- Press 1 for selecting operation options. And then  
Press 0 for personal operation with card.  
Press 1 for locker mode operation with card.  
Press 2 for cardless personal operation.  
Press 3 for cardless locker mode operation.  
Press 4 for locker mode operation card or password.



• **Assign/Delete Service card / cards:** (If you don't need to use any service card, skip this step)

1- Press **# #**, present the master card to the keypad and press **\***, green and red leds blink.

2- Press 5 for selecting service card assign / delete option. And then

Press 0 for all service cards are deleted.

Press 1 for assignment of 1. service card.

Press 2 for assignment of 2. service card.

Press 3 for assignment of 3. service card.



• **Assign User card / cards :** (If you don't need to use any user card, skip this step, when individual operation with card option is selected)

1- Press **\*** and then present master card to the keypad, press **\*** again.

2- Then enter the sequence number of user card

3- Present that card to lock.



• **Deleting User card:** (If you don't need to use any user card, skip this step, when individual operation with card option is selected)

1- Press **\*** and then present master card to the keypad, press **#**.

2- Then enter the sequence number of user card.



## OPERATING INSTRUCTIONS

### Personal operation with card (if selected)

#### ▪ To Unlock:

- 1- Press any number button for wake the lock up.
- 2- Present **any assigned user card / master card / service card** to the keypad in 3 seconds
- 3- turn the handle to the unlocked position.



#### ▪ To Lock:

- 1- Press any number button for wake the lock up.
- 2- Present **any assigned user card / master card** to the keypad in 3 seconds
- 3- Turn the handle to the locked position.



### Locker mode operation with card (if selected)

#### ▪ To Lock:

- 1- Press any number button for wake the lock up.
- 2- Present **any card / master card** to the keypad in 3 seconds
- 3- Turn the handle to the locked position.



▪ **To Unlock:**

- 1- Press any number button for wake the lock up.
- 2- Present **any card / master card / service card** to the keypad in 3 seconds
- 3- Turn the handle to the unlocked position.



**Cardless personal operation (if selected)**

▪ **Change Password:** (default "1010")

- 1- Press \* and then enter the old password by pressing number buttons, press \* again.
- 2- And then enter the new password by pressing number button, press \*



▪ **To Unlock with Password:** (default "1010")

- 1- Enter the user password. 2- Turn the handle to the unlocked position.



▪ **To Unlock with Cards:**

- 1- Press # button for wake the lock up.
- 2- Present **master card / service card** to the keypad in 3 seconds
- 3- Turn the handle to the unlocked position.



- To Lock with Password: (default "1010")  
1- Enter the user password. 2- Turn the handle to the locked position.

1



USER PASSWORD

2



- To Lock with Card:

- 1- Press # button for wake the lock up.
- 2- Present master card to the keypad in 3 seconds
- 3- Turn the handle to the locked position.

1



2



3



### Cardless locker mode operation (if selected)

- To Lock with Password: (default "1010")

- 1- Enter the new password. 2- Turn the keypad to the locked position.

1



LOCKER MODE PASSWORD

2



- To Lock with Card:

- 1- Press # button for wake the lock up.
- 2- Present master card to the keypad in 3 seconds
- 3- Turn the handle to the locked position.

1



2



3





▪ To Unlock with Password:

- 1- Enter the same password with locking operation.
- 2- Turn the handle to the unlocked position.



▪ To Unlock with Cards:

- 1- Press # button for wake the lock up.
- 2- Present master card / service card to the keypad in 3 seconds
- 3- Turn the handle to the unlocked position.



The unlocking direction depends on the type of door where miniK 10m is used. All locking and unlocking illustrations depict right handed door installation.

## Locker Mode Operation with Card or Password to Lock/Unlock (if selected)

- **To Lock with Password:** (default "1010")
  - 1- Enter the new password.
  - 2- Turn the keypad to the locked position



- **To Unlock with Password:**
  - 1- Enter the same password with locking operation.
  - 2- Turn the handle to the unlocked position.



If you lock the cam lock with password you have to open it with password not with card.

▪ **To Lock with any card:**

- 1- Press \* button for wake the lock up.
- 2- Present any card to the keypad in 3 seconds.
- 3- Turn the handle to the locked position.



▪ **To Unlock with any card:**

- 1- Press \* button for wake the lock up.
- 2- Present any card to the keypad in 3 seconds.
- 3- Turn the handle to the unlocked position.



If you lock the cam lock with any card, you have to open it with presented card not with password.

## PROGRAMMING INSTRUCTIONS

1- Press **# #**, present the master card and then press **\***, green and red leds blink.

2- Enter the program number to be customized and then enter the selected settings number. (Press Program Number and then Selection Number)



### **Restore Default Settings: Press 0 - 1**

#### **Default Settings are:**

Locker mode operation with card, audible operation, penalty operation is not active, service card is not active, locking with password, door open warning is not active, resetting user password with service card usage is not active, blocking the lock is not active.

### **Mute Operation: Press 2 - 0**

All audio warnings can be turned off if mute operation is selected (except warning beeps).

### **Audible Operation: Press 2 - 1**

Button feedback, warnings and confirmation are audible.

### **Penalty Operation: Press 3 - 1**

Prevents tampering of lock by unauthorized people. Lock is blocked for 5 minutes if wrong password / card is entered three times consecutively.

Factory default is that this feature is not active. **Press 3 - 0**

### **Delete All User Cards: Press 4 - 0**

It deletes all user cards assigned in the **Personal operation with card** option.

### **Reset User Password: Press 4 - 1**

User password is restored to default "1010" in the **Cardless personal operation** option.

**Locking with password / card: <sup>(1)</sup> Press 6 - 0**

Locking operation require a password / card to lock.

**Automatic Locking (without password/card): <sup>(1)</sup> Press 6 - 1**

Locking operation does not require a password / card to lock.

**Warning of open door : <sup>(1)</sup> Press 7 - 1**

After door is open for one minute, lock gives an audible warning to user with 8 beeps every seconds to notify user that the door has been left open.

Factory default is that this feature is not active. **Press 7 - 0**

**Resetting User Password with Service card usage: <sup>(1), (2)</sup> Press 8 - 1**

When the lock is unlocked with the service card, the user password is reset. The user password is restored to default, which is "1010".

Factory default is that this feature is not active. **Press 8 - 0**

**Blocking the lock : <sup>(2)</sup> Press 9 - 1**

If lock opened with service card, it can be blocked from further user card access. This would insure service card is only used to access locks for emergency lockouts. Master card access would then be required to set up user card again.

Factory default is that this feature is not active. **Press 9 - 0**

<sup>(1)</sup>: valid for individual operation with card or cardless personal operation options.

<sup>(2)</sup>: valid if any service card is active.

**LIGHT AND AUDIO WARNINGS:**

**Password/card is accepted** : Green LED blinks with 2 repeated audio warnings.


**Wrong password / card** : Red LED blinks with 4 repeated audio warnings.

**Low battery** : Red LED blinks 5 times after each operation.


**Lock is open** : 8 audio warnings every second after one minute of opening the lock.

Program No	Option	
<b>0</b>	<b>1</b>	<b>Factory Settings</b>
		<b>Prg No 1-1:</b> Locker mode operation with card
		<b>Prg No 2-1:</b> Audible beeps and confirmations
		<b>Prg No 3-0:</b> Penalty operation PASSIVE
		<b>Prg No 4-0:</b> Delete all user card
		<b>Prg No 5-0:</b> Service card PASSIVE
		<b>Prg No 6-0:</b> Locking with password
		<b>Prg No 7-0:</b> Warning of open door PASSIVE
		<b>Prg No 8-0:</b> Resetting User Password with Service card usage PASSIVE
		<b>Prg No 9-0:</b> Lock block PASSIVE (if service card is active)
<b>1</b>	<b>0</b>	Personal Operation with card ( individual operation)
	<b>1</b>	Locker Mode Operation with card (multiple user)
	<b>2</b>	Cardless Personal Operation
	<b>3</b>	Cardless Locker Mode Operation (multiple user)
	<b>4</b>	Locker Mode Operation with Card or Password
<b>2</b>	<b>0</b>	Mute Operation
	<b>1</b>	Audible Operation
<b>3</b>	<b>0</b>	Penalty PASSIVE
	<b>1</b>	Penalty ACTIVE
<b>4</b>	<b>0</b>	Delete all user cards.
	<b>1</b>	User password is restored to default, which is "1010".
<b>5</b>	<b>0</b>	Service Card PASSIVE / DELETE
	<b>1</b>	Assignment of 1.Service Card
	<b>2</b>	Assignment of 2.Service Card
	<b>3</b>	Assignment of 3.Service Card
<b>6</b>	<b>0</b>	Locking with Password
	<b>1</b>	Automatic Locking
<b>7</b>	<b>0</b>	Warning of door open PASSIVE
	<b>1</b>	Warning of door open ACTIVE
<b>8</b>	<b>0</b>	Resetting User Password with Service card usage PASSIVE
	<b>1</b>	Resetting User Password with Service card usage ACTIVE
<b>9</b>	<b>0</b>	Block the Lock PASSIVE (if service card is active)
	<b>1</b>	Block the Lock ACTIVE (if service card is active)

## MAINTENANCE:

-  - Clean front of lock with a mild damp cloth with detergent if needed.
- Do not use any hard or scratching cleanser.
- Do not clean with chemical materials that melt plastic (thinner, acetone, etc.)
- Be careful not to spill water on lock.

## GENERAL WARNINGS:

-  - Read manual before using lock.
- Periodically check nuts and screws to be tightened.
- Do not over-tighten nuts or screws. Do not use an electric screw gun during installation unless equipped with a torque adjuster. The maximum torque on the cylinder screw is 2Nm.
- Set and test user and master password prior to installing the lock
- Change all default passwords with your own passwords.
- Common sense, but we must say it... Do not keep the passwords in the cabinet where the lock is being installed!
- It is not possible to open lock if installed and you forget the user and master password.
- Lock gives a warning beep when incorrect passwords have been entered in repeatedly.
- Not possible for front side of lock to be opened by breaking or trying to force open lock.
- Use CR2450 3.0V Lithium batteries.
- Remember that battery consumption is high when programs 2, 3, and 7 are active.

## CAMS:

- Two cams are included
- Cams can be placed at increments of 90 degrees
- The Stop Cam (#4) in installation instructions can be positioned for turning the cam clockwise or counter-clockwise



7/8" Straight Cam  
22mm



1-1/2" Straight Cam  
38mm



## OTHER:

Battery failure override- The miniK 10m has 2 external nodes surrounding the red and green indicator lights where an external battery can be connected long enough to enter in the correct code to open the lock allowing new batteries to be installed.

## ATTENTION!

In case of any failure, inform the vendor in writing of the detailed description of the failure. In case of any intervention in the device, such as attempting to repair the device, the device gets **OUT OF WARRANTY**.

## LIMITED WARRANTY:

Kilitronik offers a one year limited warranty all products to be free from manufacturing defects in materials and workmanship. This warranty does not cover the battery, lost combinations or damages caused by improper mounting, improper or unreasonable use.

## LIABILITY LIMITS:

This is a limited warranty and is in lieu of all other warranties (including the implied warranties of merchantability and fitness for use) and under no circumstances shall Kilitronik be liable for any incidental or consequential damages or losses.

## TECHNICAL SPECIFICATIONS:

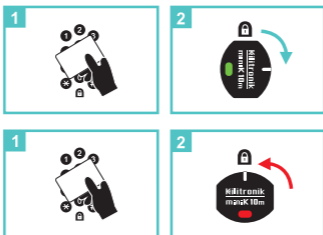
Weight	71 g (2.5 oz) (excluding cam and mounting)
Key Pad	Silicone Keypad with metal dome
Operating Temperature	50 - 122 °F (+10 / +50 °C)
Storage Temperature	32 - 140 °F (+0 / +60 °C)
Operating Moisture	20% - 80% Rh (without condensation)
Replaceable Battery	3V Lithium CR2450
Battery Life (*)	up to 2 years (for 5 uses a day)

- ⚠ ATTENTION:** (\*) (Battery life may vary in accordance with battery brand, programming parameters and environmental conditions of the product is used.)
- ⚠ ATTENTION:** Remember to write down your passwords after programming and prior to installing lock. It is not possible to open lock if it is installed and you forget your passwords.
- ⚠ ATTENTION:** miniK 10m is made for only interior usage.

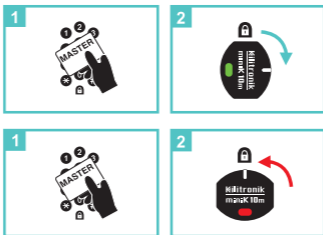



## QUICK INFO

### LOCKING / UNLOCKING WITH USER CARD



### LOCKING / UNLOCKING WITH MASTER CARD



If cardless personal operation option or cardless locker mode operation option is selected, you should press  button at first to lock and unlock by using the master card.

Notes: .....

.....

.....

.....

.....

.....

.....

.....

.....

.....

.....

.....

.....

.....

.....

.....

.....

.....

Notes: .....

.....

.....

.....

.....

.....

.....

.....

.....

.....

.....

.....

.....

.....

.....

.....

.....

.....

# miniK 10m

unique electronic cam lock

Schools



Hospitals



Spa  
and  
Baths



In  
Mailboxes



eco-friendly

Sports Halls



Staff Lockers



Vemus Endüstriyel Elektronik San. Ve Tic. Ltd. Şti.  
NOSAB Zeytin C.14 16220 Nilufer / BURSA  
Phone : + 90 224 411 10 30  
Fax : + 90 224 411 10 31

**Kilitronik** and **miniK 10m** are trademarks of VEMUS Endüstriyel Elektronik Ltd.



[www.kilitronik.com](http://www.kilitronik.com)



Rev.00 011 580 0589